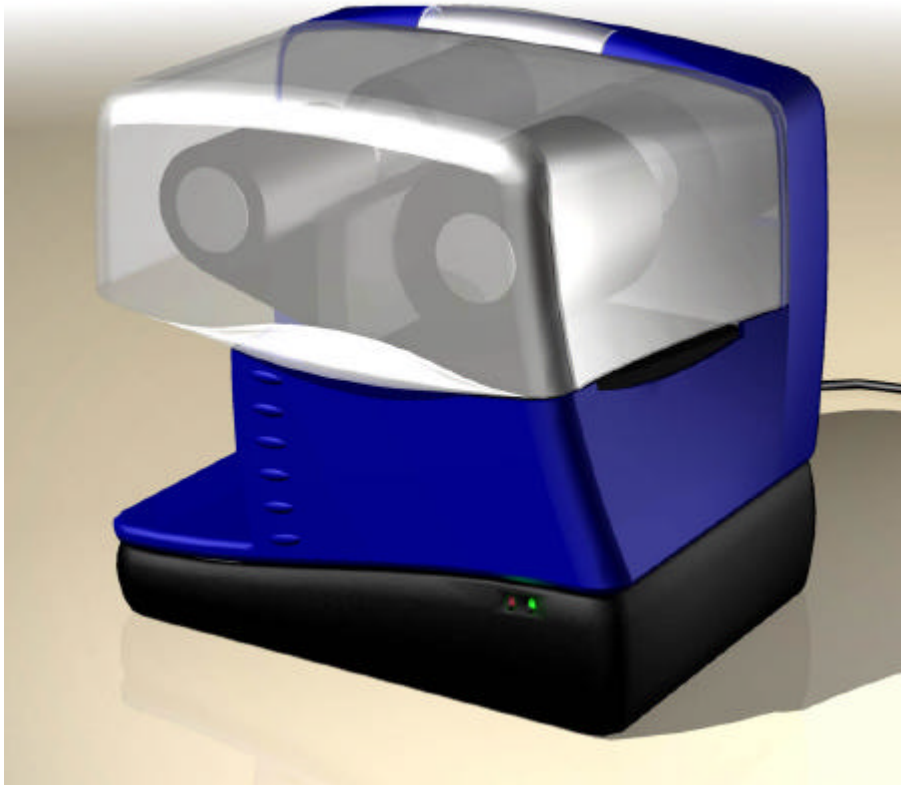




Tél.: 021 - 869 97 70 - Fax : 021 - 869 96 02

## CARD PRINTERS



-----  
*A new generation of very small desktop monochrome card printer to print text, photos, logos and bar codes using 3 different thermal printing technologies*

# K8

**CHEAP and SMALL manual card printer**

### **Innovative and powerful**

To design the cheapest and the smallest card printer, our engineers have implemented few innovative solutions. The result is **K8**, the first printer to use 3 different technologies :

- thermal transfer
- direct thermal
- direct thermal rewritable

**K8** uses a 32 bit micro-controller, a serial or a USB\* port communication interfaces.

### **Technology and printing characteristics**

**K8** offers high resolution 300 dpi printing on multi-thickness PVC, ABS, PET, thermochromic erasable and rewritable cards from 0,3 up to 0,8 mm (.01'' to .03''), without any special tuning.

4 resident fonts, 4 resident bar codes and all WINDOWS bitmap fonts and bar codes are available on **K8**. Switching from one printing technology to another is simply driven by software.

### **Easy to use for many applications**

**K8** WINDOWS driver allows easy access to the printer from most of WINDOWS applications.

This printer requires very small space. The rewritable technology brings a new concept of dynamic promotion space feature for loyalty cards applications. But **K8** is also suitable for access control cards, ID cards, membership and many other applications,.....

*We design and manufacture printers for over 10 years*

# K8 CARD PRINTER

## TECHNICAL SPECIFICATIONS

<b>Characteristics</b>	Manual feeding 32 bits micro-controller Multi-thickness printing system
<b>Print Method</b>	Thermal transfer Direct thermal Rewritable direct transfer
<b>Print Specifications</b>	Resolution : 300 dpi Fonts : 4 resident Fonts Bitmap WINDOWS fonts Bar codes : 2/5, 2/5 interleaved, code 39, EAN128 Bitmap WINDOWS fonts
<b>Communication Interfaces</b>	Serial RS232C USB*
<b>Power supply</b>	external power supply Auto-switch 100-250 V, 50/60 Hz
<b>Consumables</b>	Plastic cards ABS, PVC, PET Thermochromic erasable and rewritable cards Thickness : 0,3 mm up to 0,8 mm .01'' up to .03'' Size : ISO 7810 Ribbon for thermal transfer printing only 1000 cards
<b>Dimensions</b>	185 x 132,5 x 160 mm (W x D x H) (7.28'' x 5.21'' x 6.30'')
<b>Weight</b>	2,2 kg (4.80 lbs)



La Rosaire 5  
CH 1123 Aclens - Switzerland  
Tel: +41 (0)21 869 97 70  
Fax : +41 (0)21 869 96 02  
**E-mail** : [info@gomaro.ch](mailto:info@gomaro.ch)  
[www.gomaro.ch](http://www.gomaro.ch)